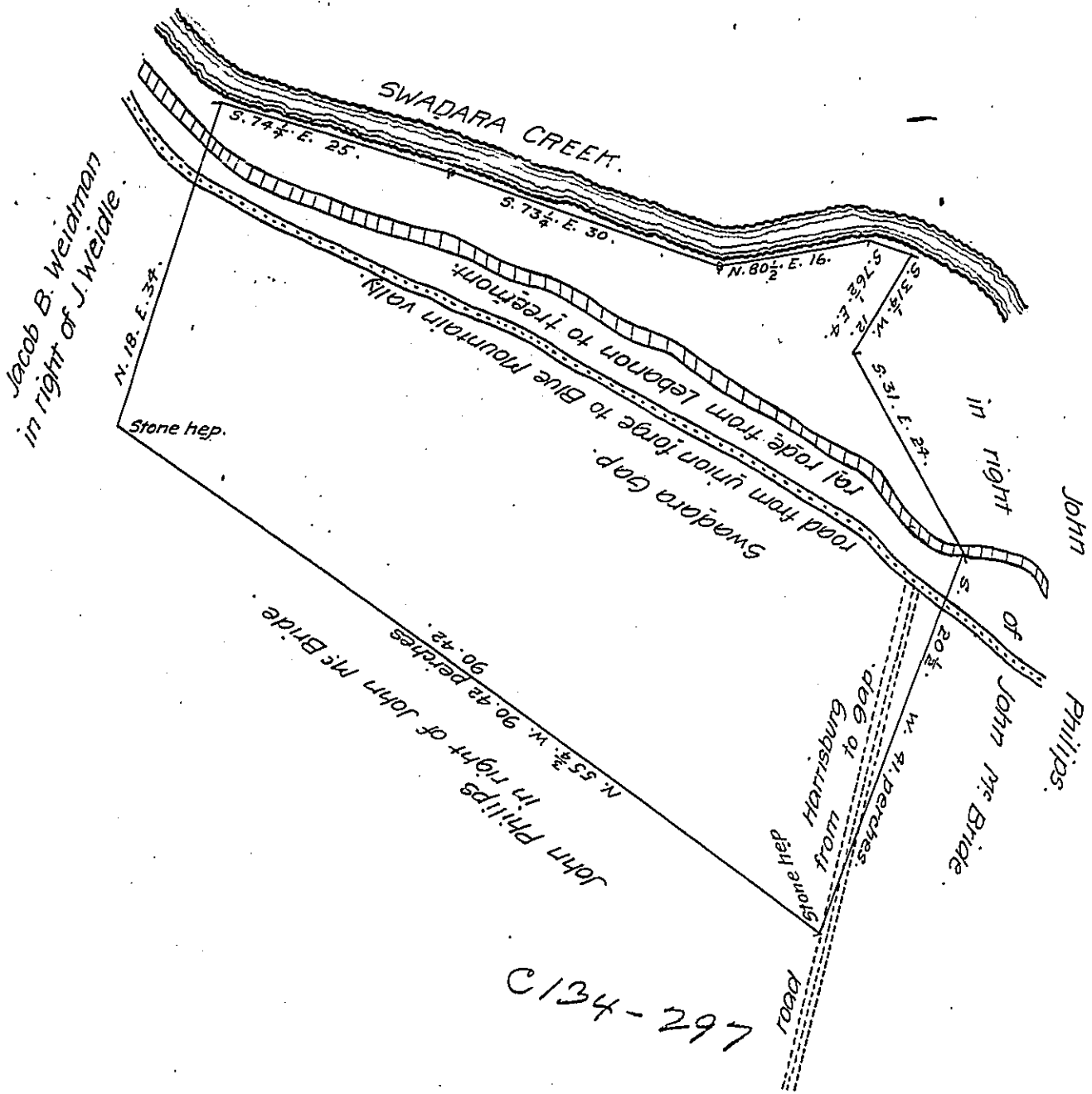


FORM NO 1.



A draft of a tract of Land Situate in Union Township Lebanon County Containing 23 acres and 123 perches and allowance of Six per Cent for roads &c. Surveyed the 21<sup>st</sup> day of December 1875 in pursuance of a Warrant Granted to W. Morris Weideman for the Heirs of Jacob B. Weideman dated October 28<sup>th</sup> 1875.

Martin Meily. D.S.

To William McCandless

for Lebanon County.

Secretary of internal affairs.

I hereby Certify that the foregoing is a Correct Copy of a Survey filed among the records of the County Surveyer office of this County, and that it has been found found Correct.

Recorded in County Surveyers Book. No. 1. Page 70.

IN TESTIMONY that the above is a copy of the original remaining on file in the Department of Internal Affairs of Pennsylvania, made conformably to an Act of Assembly approved the 16th day of February, 1833, I have hereunto set my Hand and caused the Seal of said Department to be affixed at Harrisburg, this twenty fifth day of July 1907.

*Henry Houch*  
Secretary of Internal Affairs.